

RELY ON EXCELLENCE

## SPN

### Seal Supply Systems | Manual refill pumps



#### Features

The hand refill pump (shown: SPN4016) consists of a storage vessel with level indicator, filling filter and a hand pump with integrated check valve. It is mounted directly on the thermosiphon vessel or pressure booster.

There is a choice of two basic types in the SPN range of products:

**SPN2000:** Stainless steel refill pump for universal applications

**SPN4000:** specifically for use with TS1016 systems

#### Functional description

The hand refill pump is designed for manual refilling during operation in case of buffer fluid losses.

#### Advantages

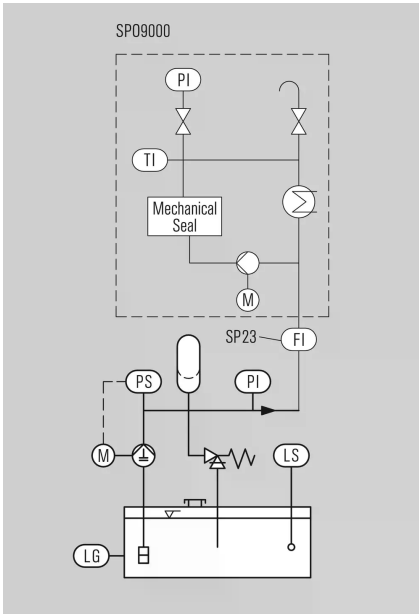
- For efficient processes, with a choice of 2 basic types
- For manual refilling of buffer fluid units during operation
- SPN4016 vessel made of polyethylene: suitable for use in potentially explosive environments
- SPN2000 in stainless steel and acrylic or borosilicate sight-glasses: suitable for highly corrosive media
- Two sight-glasses for reading the MIN/MAX fluid level
- Reliable mode of operation: Combined filling and ventilation filter in the hand refill pump

#### Recommended applications

- Chemical industry
- Petrochemical industry
- Oil and gas industry
- Refining technology
- Pulp and paper industry
- Food and beverage industry

RELY ON EXCELLENCE

## Installation, details, options



Operating and installation diagram for an automatic refill unit.

## RELY ON EXCELLENCE

### Product variants

Designation	Volume (liters)	Allowable temperature	Material, vessel	Material, sight-glass/ seal	Material, filling filter	Pressure control valve
			Stainless steel	Polyethylene	Acrylic glass, Perbunan	Borosilicate, T2
SPN2030	2	60 °C (140 °F)	■		■	
SPN2063	2	60 °C (140 °F)	■		■	
SPN2063/A015	2	60 °C (140 °F)	■		■	
SPN2063/A100	2	60 °C (140 °F)	■			■
SPN2063/A200	2	60 °C (140 °F)	■			■
SPN4016	2	70 °C (158 °F)		■	■	



**SPN2063**