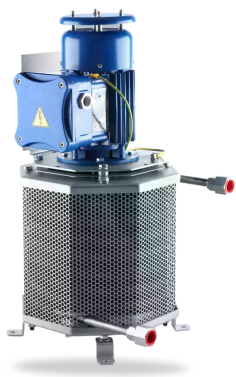


RELY ON EXCELLENCE

WEL5

Seal Supply Systems | Heat exchangers



Features

Heat exchangers of the WEL5 range (photo: WEL5200/M001-D0) are used to cool process/barrier fluids in seal supply circuits. The heat exchangers are made of helical finned tubes. The cooling medium is ambient air. It is important, therefore, for WEL5 heat exchangers to be installed in well ventilated places indoors or, ideally, outdoors. The integrated fan blower ensures the necessary cooling air flow. The WEL5 range is provided as a compact packaged unit completely assembled.

Circulation in accordance with API 682 / ISO 21049: [Plan 21](#), [Plan 22](#), [Plan 23](#), [Plan 41](#)

Advantages

- Compact Design
- Can also be used with non-optimal cooling air exchange
- Helical finned tube with efficient air circulation
- High resistance to corrosive fluids due to stainless steel components
- No cooling water supply and heating of cooling water line required in winter

Standards and approvals

- Calculation based on ASME VIII, Div. 1

Recommended applications

- Chemical industry
- Petrochemical industry
- Oil and gas industry
- Refining technology
- Power plant technology

RELY ON EXCELLENCE

Installation, details, options

Product variants

Designation	WEL5200/M001-D0
Design code	ASME VIII, Div. 1
Process connections	3/4" NPT (f)
Allowable pressure	110 bar (1,600 PSI)
Allowable temperature	-29 °C ... +260 °C (-20 °F ... +500 °F)
Cooling performance (kW) ¹⁾	2.4
Supply voltage	230 V/400 V / 50Hz
Power consumption	0.25 kW
Type of explosion protection	Ex II2GEx d IIC T4 Gb
Ingress of protection	IP55
Material	316/316L

1) The cooling performance depends on the available fluids, their temperatures and flow rates. Please contact EagleBurgmann for professionally selecting the correct heat exchanger.

Other versions on request.