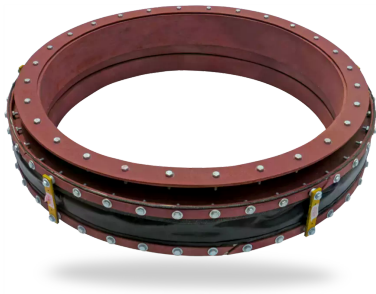


RELY ON EXCELLENCE

## Thermoflex expansion joints

Expansion Joints | Fabric expansion joints



### Features

- Multilayered design
- Compensated for movements in several directions simultaneously
- Can be delivered as fabric expansion joint or as preassembled unit
- Custom made to fit actual working conditions

### Advantages

- Good flexibility
- High chemical resistance
- Reduced heatloss
- Minimal reaction force

### Operating range

Temperature:

-35 °C ... +575 °C (-31 °F ... +1,067 °F)

Pressure:

-0.2 bar ... 0.2 bar (-2.9 PSI ... 2.9 PSI)

### Standards and approvals

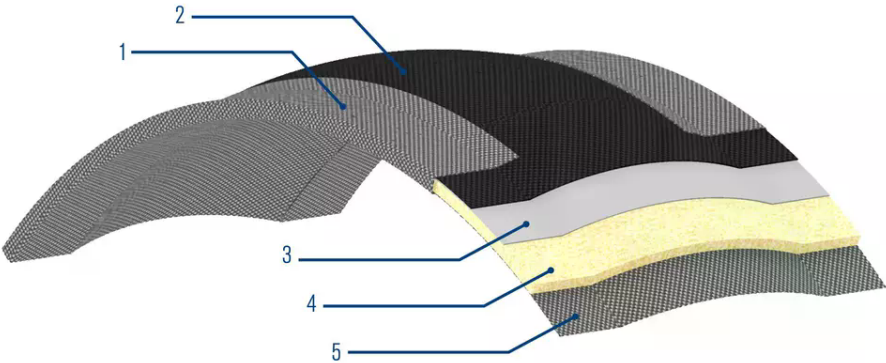
- EN 10204-2.2 Certificate
- Safety Data Sheet (SDS) for base material.

### Recommended applications

- Process industry
- Oil and gas industry
- Refining technology
- Power plant technology
- Pulp and paper industry
- Metal production and processing
- Cement industry
- Flue gas ducts
- Boiler inlets
- Boiler outlets
- Pipe penetration
- Process lines
- Stacks

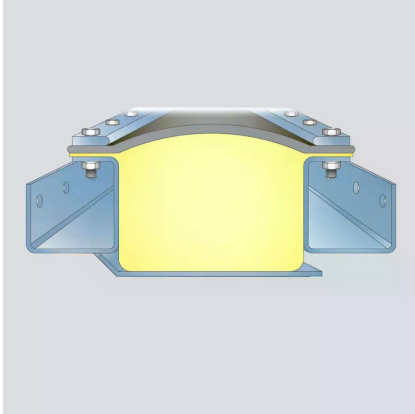
## RELY ON EXCELLENCE

Item	Description
1	Flange reinforcement
2	Pressure carrying layer
3	Gas seal layer
4	Insulation layer
5	Support layer



RELY ON EXCELLENCE

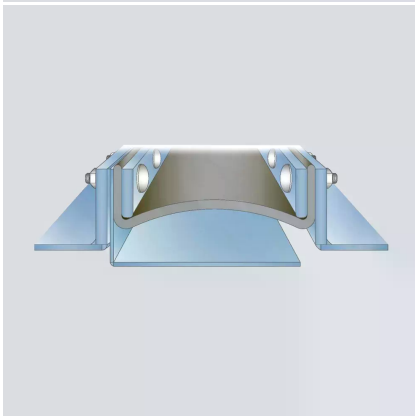
## Installation, details, options



### P-Flanges with double sleeve

Temperature: ... 575 °C (1067 °F)

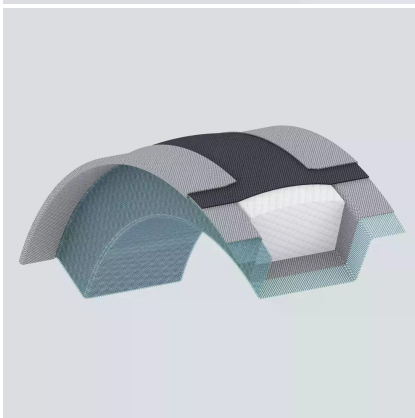
Media with medium dust content.



### V-Flanges with single sleeve

Temperature: ... 450 °C (842 °F)

Media with low dust content.

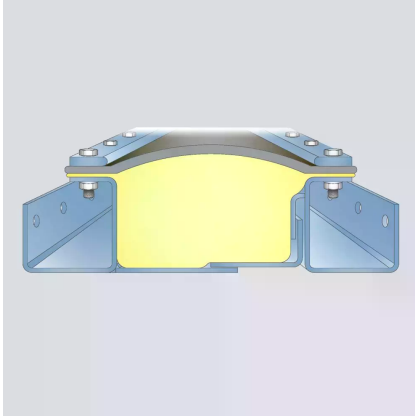


### Bolster

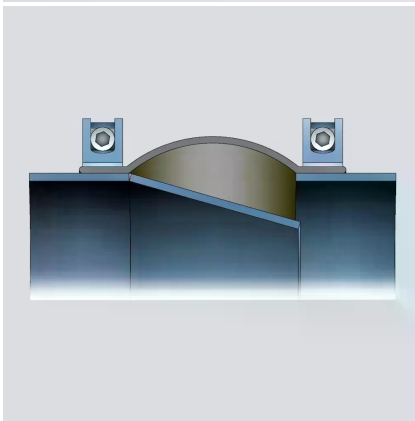
All expansion joints can be combined with a bolster/ internal insulation to enhance the design in respect to:

- Dust accumulation
- Heat loss
- Surface temperature/low risk
- Flutter/pressure fluctuations
- Noise reduction
- Extended life

## RELY ON EXCELLENCE



**P-Flanges with floating ring**  
Temperature: ... 575 °C (1,067 °F)  
Media with high dust content.

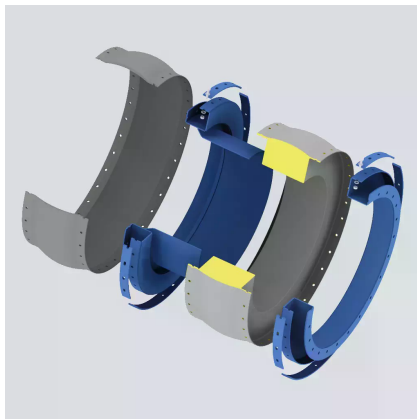


**P-Flanges with single sleeve and clamping bands**  
Temperature: ... 450 °C (842 °F)  
Media with low dust content.

RELY ON EXCELLENCE

## Product variants

Type	Agressivemedia	Non-aggressivemedia	Max. temperatureP-Flange	Max. temperatureV-Flange	Max. temperaturePFH-100	Min. temperature
N25	N/A	Dry	250 °C(482 °F)	250 °C(482 °F)	400 °C(752 °F)	-35 °C(-31 °F)
C25	Dry	Dry	250 °C(482 °F)	250 °C(482 °F)	400 °C(752 °F)	-35 °C(-31 °F)
C40	Dry	Dry	400 °C(752 °F)	400 °C(752 °F)	500 °C(932 °F)	-35 °C(-31 °F)
C55	Dry	Dry	550 °C(1,022 °F)	450 °C(842 °F)	575 °C(1,067 °F)	-35 °C(-31 °F)



### Pre-assembled units

Pre-assembled expansion joint units consist of:

- Fabric expansion joint
- Metal frames/inner sleeves
- Gasket (optional)
- Fasteners

Frame material:

- Carbon steel
- Stainless steel
- Heat resistant steel

Pre-assembled expansion joint units can be supplied with surface treatment that is corrosion resistant (standard) and resistant to high temperatures.

EagleBurgmann KE offers any RAL color code for the units. Units can be delivered with seaworthy packing or standard packing for road transportation.