

RELY ON EXCELLENCE

Fluastal expansion joints

Expansion Joints | Fabric expansion joints



Features

- Multi layer design
- Compensates for movements in several directions simultaneously
- Excellent form stability
- Can be delivered as fabric only or as preassembled unit
- Custom made to fit actual working conditions

Functional description

Fluastal expansion joints safely absorb thermal expansion and misalignments in pipe and duct systems in dry and high temperature area.

Flexgen products compensate for movements in multiple directions simultaneously.

Advantages

- Highly flexible
- High chemical resistance
- High flutter resistance
- Reduced heat loss
- Low reaction forces
- Good resistance against abrasion
- Suitable for high temperature applications

Operating range

Temperature*:

-35 °C ... +575 °C (-31 °F ... +1,067 °F)

Pressure:

-0.2 bar ... 0.2 bar (-2.9 PSI ... 2.9 PSI)

Maximal movements:

Axial ... 160 mm (6.5")

Lateral ... 80 mm (3")

* Temperatures above 750 °C (1,382 °F) requires internal duct insulation or refractory lining.

Standards and approvals

Documentation:

- EN 10204-2.2 certificate

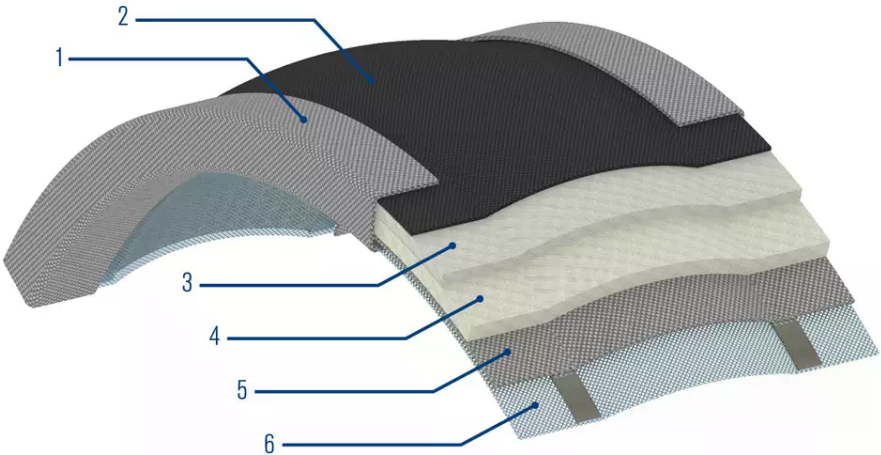
- Safety Data Sheets (SDS) for individual materials

Recommended applications

- Process industry
- Oil and gas industry
- Pharmaceutical industry
- Power plant technology
- Metal production and processing
- Cement industry
- Flue gas duct systems
- Boiler inlets and boiler outlets
- Penetration seals
- Process lines
- Stack connections

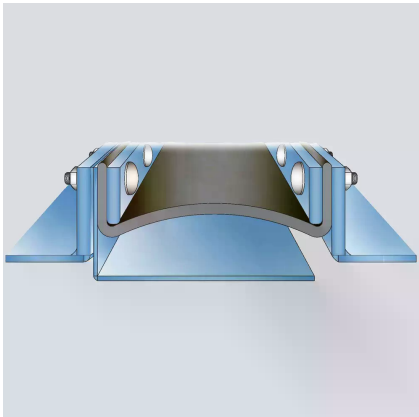
RELY ON EXCELLENCE

Item	Description
1	Flange reinforcement
2	Pressure carrying layer / gas seal layer
3, 4	Insulation layer
5	Support layer
6	Mechanical reinforcement

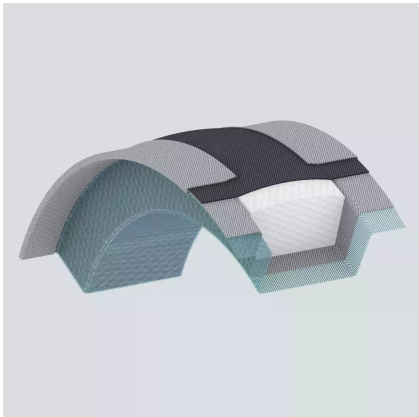


RELY ON EXCELLENCE

Installation, details, options



Temperature: ... 450 °C (842 °F)
Media with medium dust content.



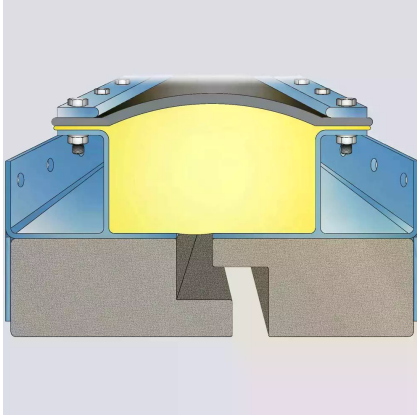
All expansion joints can be combined with a bolster/
internal insulation to enhance the design in respect
to:

- Dust accumulation
- Heat loss
- Surface temperature/low risk
- Flutter/pressure fluctuations
- Noise reduction
- Extended life



Temperature:
750 °C (1,382 °F)
Media with high dust content.

RELY ON EXCELLENCE

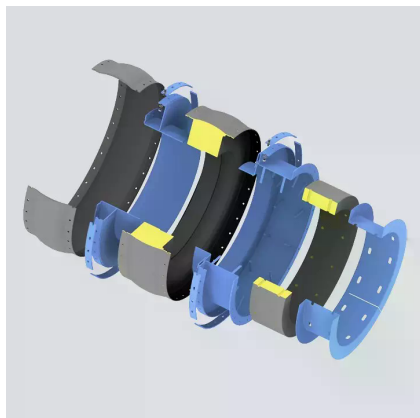


Temperature:
... 1,000 °C (1,832 °F)
Media with high dust content.

RELY ON EXCELLENCE

Product variants

Type	Agressivemedia	Non-aggressivemedia	Max. temperatureP-Flange	Max. temperatureV-Flange	Max. temperaturePFH-100	Min. temperature	Max. pressure	Min. pressure	Axialflexibility	L
SU	N/A	Dry	250 °C(482 °F)	250 °C(482 °F)	400 °C(752°F)	-35 °C(-31 °F)	0.2 bar(2.9 PSI)	-0.2 bar(-2.9 PSI)	40 %	2
SX	Dry	Dry	250 °C(482 °F)	250 °C(482 °F)	400 °C(752 °F)	-35 °C(-31 °F)	0.2 bar(2.9 PSI)	-0.2 bar(-2.9 PSI)	40 %	2
GX	Dry	Dry	400 °C(752 °F)	400 °C(752°F)	500 °C(932°F)	-35 °C(-31 °F)	0.2 bar(2.9 PSI)	-0.2 bar(-2.9 PSI)	40 %	15
Mx	Dry	Dry	550 °C(1922 °F)	450 °C(842 °F)	575 °C(1067 °F)	-35 °C(-31 °F)	0.14 bar(2.03 PSI)	-0.14 bar(-2.03 PSI)	40 %	15
KX	Dry	Dry	750 °C(1382 °F)	N/A	750 °C(1382 °F)	-35 °C(-31 °F)	0.12 bar(1.74 PSI)	-0.14 bar(-2.03 PSI)	40 %	15
HDX	Dry	Dry	1000 °C(1832 °F)	N/A	1000 °C(1831 °F)	-35 °C(-31 °F)	0.06 bar(0.87 PSI)	-0.14 bar(-2.03 PSI)	35 %	13



Pre-assembled units

Pre-assembled expansion joint units consist of:

- Fabric expansion joint
- Metal frames/inner sleeves
- Gasket (optional)
- Fasteners

Frame material:

- Carbon steel
- Stainless steel
- Heat resistant steel

Pre-assembled expansion joint units can be supplied with surface treatment that is corrosion resistant (standard) and resistant to high temperatures. EagleBurgmann KE offers any RAL color code for the units. Units can be delivered with seaworthy packing or standard packing for road transportation.