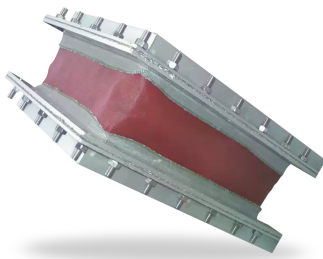


RELY ON EXCELLENCE

Fluachem expansion joints

Expansion Joints | Fabric expansion joints



Features

- Single layer design
- Compensates for movements in several directions simultaneously
- Can be delivered as fabric only or as preassembled drop in unit
- For dry and wet condition
- Custom made to fit actual working conditions

Functional description

Fluachem expansion joints safely absorb thermal expansion, vibrations and misalignments in pipe and duct systems in chemical aggressive areas. Fluachem products compensate for movements in multiple directions simultaneously.

Advantages

- Highly flexible
- Excellent chemical resistance
- Minimal reaction forces
- Excellent abrasion resistance (Depending on material selection)
- 100% gas tightness

Operating range

Temperature: -35 °C ... +425 °C (-31 °F ... +797 °F)

Pressure: -0.35 bar ... 0.35 bar (-5 PSI ... 5 PSI)

Maximal axial movements: ... 200 mm (8")

Maximal lateral movements: ... 40 mm (1 1/2")

Standards and approvals

Documentation:

- EN 10204-2.2 certificate
- Safety Data Sheets (SDS) for individual materials

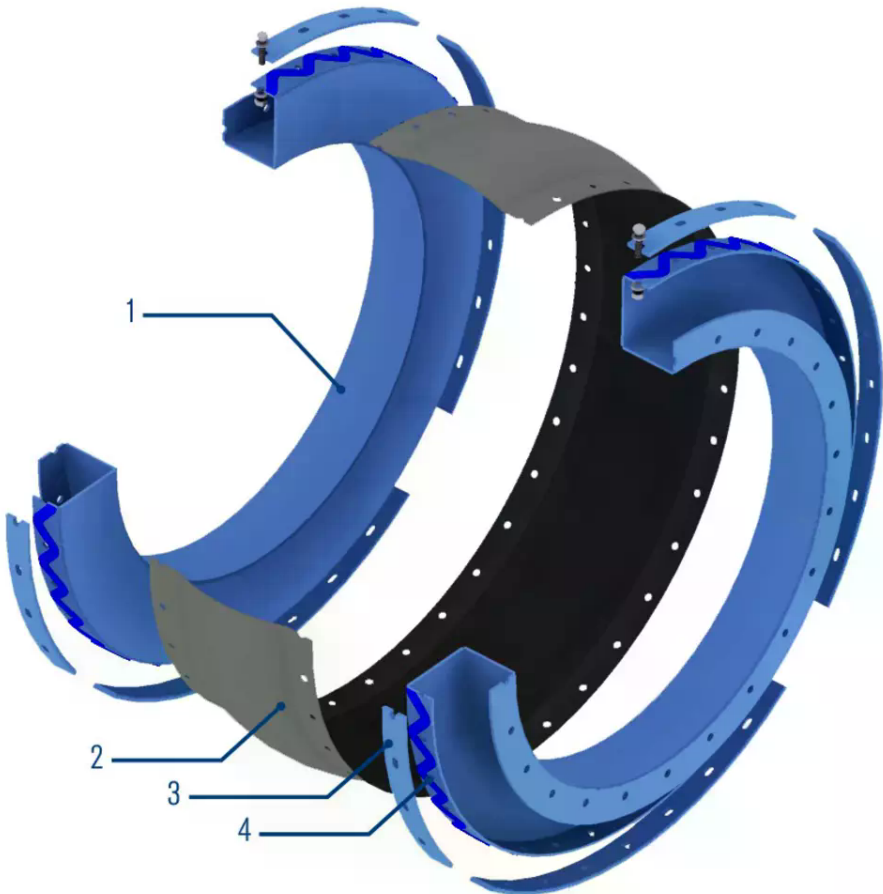
Recommended applications

- Process industry
- Oil and gas industry
- Refining technology
- Petrochemical industry
- Chemical industry
- Pharmaceutical industry
- Power plant technology
- Sugar industry
- Metal production and processing

- FGD

- Flue gas duct systems
- Conventional boilers
- Condensers
- Filtration / precipitators
- Scrubbers / absorbers
- Chemical process lines
- Stack connections

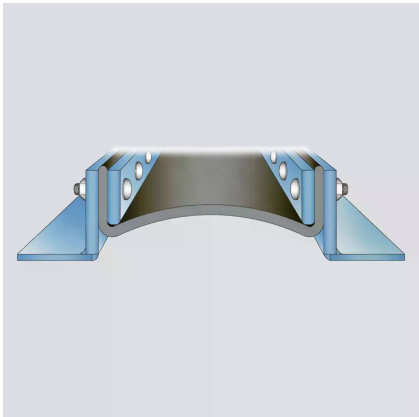
RELY ON EXCELLENCE



| Item | Description |
|------|-----------------|
| 1 | Frames |
| 2 | Expansion joint |
| 3 | Clamp bar |
| 4 | Gasket |

RELY ON EXCELLENCE

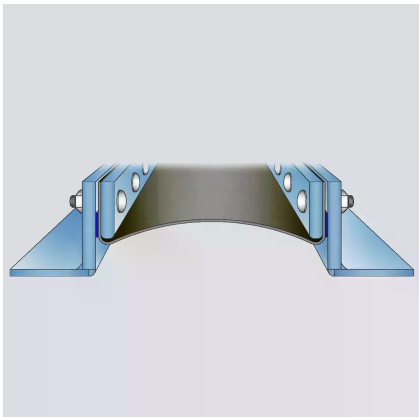
Installation, details, options



Temperature: ... 200 °C (392 °F)
Medium to high flow velocity.
Media with medium dust content.

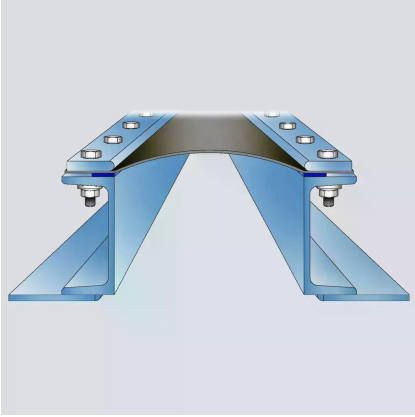


Temperature: ... 200 °C (392 °F)
Medium to high flow velocity.
Media with low to medium dust content.



Temperature: ... 300 °C (572 °F)
Medium to high flow velocity.
Media with low to medium dust content.

RELY ON EXCELLENCE

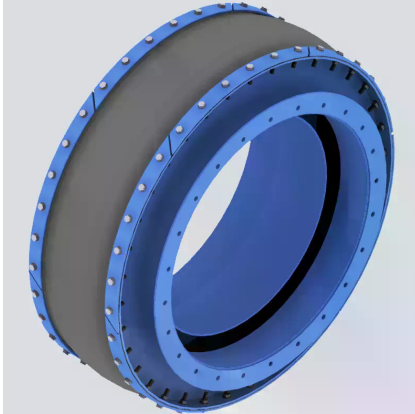


Temperature: ... 300 °C (572 °F)
Medium to high flow velocity.
Media with low dust content.

RELY ON EXCELLENCE

Product variants

| Type | Agressivemedia | Non-aggressivemedia | Max. temperatureP-Flange | Max. temperatureV-Flange | Max. temperaturePFH-100 | Min. temperature | Max. pressure | Min. pressure | Axialflexibility |
|-------------|----------------|---------------------|--------------------------|--------------------------|-------------------------|------------------|------------------|--------------------|------------------|
| Butyl 600GS | Wet | Wet | 80 °C(176 °F) | 80 °C(176 °F) | 180 °C(356 °F) | -35 °C(-31 °F) | 0.35 bar(5 PSI) | -0.35 bar(-5 PSI) | 25 % |
| EPDM 400G | Wet | Wet | 120 °C(248 °F) | 120 °C(248 °F) | 220 °C(428 °F) | -35 °C(-31 °F) | 0.35 bar(5 PSI) | -0.35 bar(-5 PSI) | 35 % |
| EPDM 600GG | Wet | Wet | 120 °C(248 °F) | 120 °C(248 °F) | 220 °C(428 °F) | -35 °C(-31 °F) | 0.35 bar(5 PSI) | -0.35 bar(-5 PSI) | 25 % |
| EPDM 600S | Wet | Wet | 120 °C(248 °F) | 120 °C(248 °F) | 220 °C(428 °F) | -35 °C(-31 °F) | 0.35 bar(5 PSI) | -0.35 bar(-5 PSI) | 25 % |
| FKM 320G | Wet | Wet | 200 °C(392 °F) | 200 °C(392 °F) | 300 °C(572 °F) | -25 °C(-13 °F) | 0.2 bar(2.9 PSI) | -0.2 bar(-2.9 PSI) | 35 % |
| FKM 350S | Wet | Wet | 200 °C(392 °F) | 200 °C(392 °F) | 300 °C(572 °F) | -25 °C(-13 °F) | 0.35 bar(5 PSI) | -0.35 bar(-5 PSI) | 25 % |
| FKM 450GS | Wet | Wet | 200 °C(392 °F) | 200 °C(392 °F) | 300 °C(572 °F) | -25 °C(-13 °F) | 0.35 bar(5 PSI) | -0.35 bar(-5 PSI) | 30 % |
| FKM 600GG | Wet | Wet | 200 °C(392 °F) | 200 °C(392 °F) | 300 °C(572 °F) | -25 °C(-13 °F) | 0.35 bar(5 PSI) | -0.35 bar(-5 PSI) | 25 % |
| FKM 600GS | Wet | Wet | 200 °C(392 °F) | 200 °C(392 °F) | 300 °C(572 °F) | -25 °C(-13 °F) | 0.35 bar(5 PSI) | -0.35 bar(-5 PSI) | 25 % |
| C | Wet | Wet | 270 °C(518 °F) | 270 °C(518 °F) | 400 °C(752 °F) | -35 °C(-31 °F) | 0.2 bar(2.9 PSI) | -0.2 bar(-2.9 PSI) | 50 % |
| O | Wet | Wet | 270 °C(518 °F) | 270 °C(518 °F) | 400 °C(752 °F) | -35 °C(-31 °F) | 0.2 bar(2.9 PSI) | -0.2 bar(-2.9 PSI) | 50 % |
| HD | Wet | Wet | 300 °C(572 °F) | 300 °C(572 °F) | 425 °C(797 °F) | -35 °C(-31 °F) | 0.2 bar(2.9 PSI) | -0.2 bar(-2.9 PSI) | 50 % |



Pre-assembled units

Pre-assembled expansion joint units consist of:

- Fabric expansion joint
- Metal frames/inner sleeves
- Gasket (optional)
- Fasteners

Frame material:

- Carbon steel
- Stainless steel
- Heat resistant steel

Pre-assembled expansion joint units can be supplied with surface treatment that is corrosion resistant (standard) and resistant to high temperatures. EagleBurgmann KE offers any RAL color code for the units. Units can be delivered with seaworthy packing or standard packing for road transportation.