

RELY ON EXCELLENCE

MagBlower model 128

Blowers



Features

- Hermetically sealed
- No contamination of process
- No process gas to atmosphere
- Always below 85 dBA noise levels
- Low heat generation and high torque transfer magnetic coupling
- Pulsation free gas flow
- Engineered designs available to meet special requirements

Functional description

The Magnetic coupling allows power transfer from the electric motor to the impeller without mechanical contact; eliminating the need for a shaft seal. The bearings suitable for the application support the impeller shaft in the blower housing. The gas enters the blower and the energy put into the gas from the blower impeller, produces flow and a pressure increase as required for the application before exiting the blower outlet.

Notes

Options:

- Horizontal or vertical design
- Centrifugal or regenerative impeller

Advantages

- The MagBlower delivers abundant, reliable, and consistent gas flow, in every situation with no leakage.
- Simple to set-up, easy to operate
- High reliability and availability
- Designed for continuous operation
- Low maintenance costs
- Energy efficient

Operating range

Pressure: Vacuum ... 20.7 bar (300 PSI)

Temperature:

-40 °C ... +200 °C (-40 °F ... +392 °F)

Head: ... 34.5 Kpa (5 PSI) on air

Flow: 325 m³/h (191 CFM) on air

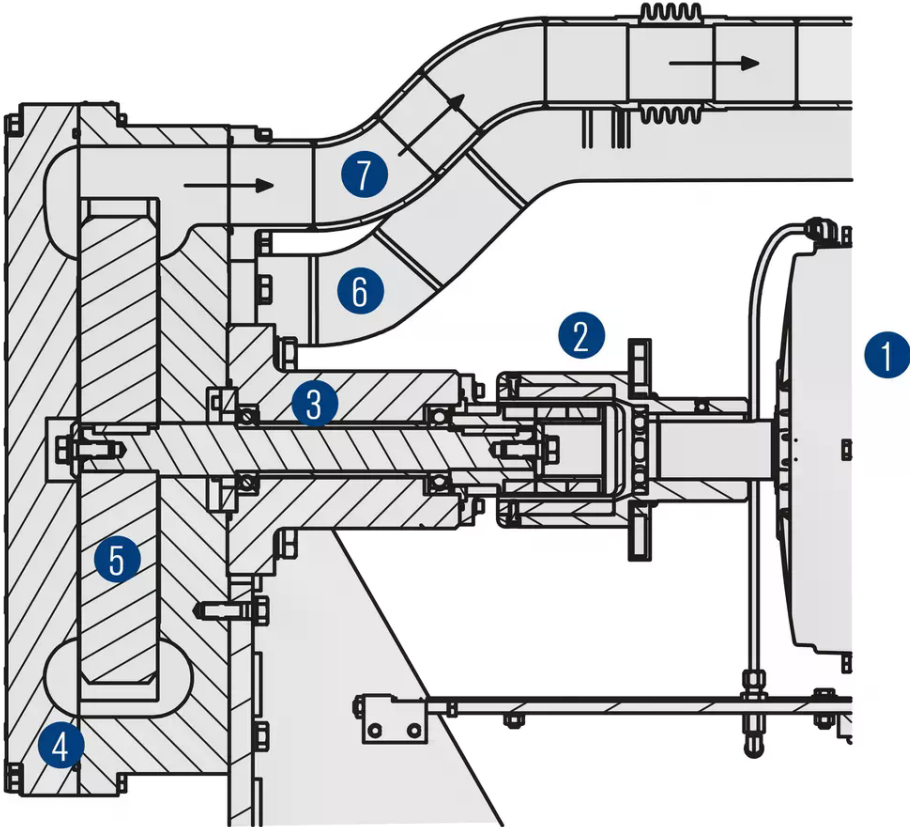
Models outside of these operating ranges are available on request.

Recommended applications

- Oil and gas industry
- Refining technology
- Chemical industry
- Petrochemical industry
- Pharmaceutical industry
- Nuclear applications
- Research
- Manufacturing
- Vapor recovery

RELY ON EXCELLENCE

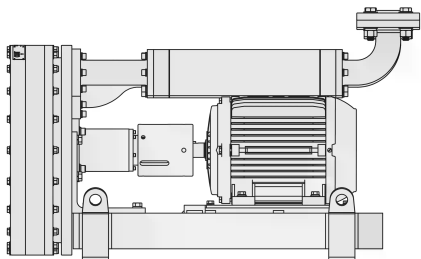
- Single to four stage in series or parallel
- Bearings to meet application requirements
- Noise reduction cover



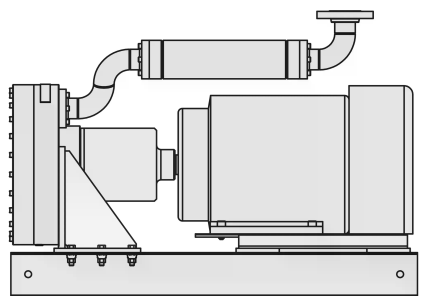
Item	Description
1	Motor
2	Magnetic coupling
3	Bearing assembly
4	Blower housing
5	Impeller
6	Inlet
7	Outlet

RELY ON EXCELLENCE

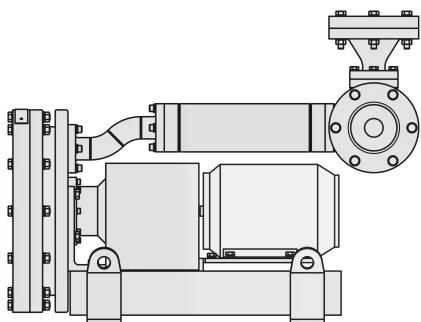
Product variants



Blower type: Two stage, regenerative
 Speed: min. 750 min⁻¹, max. 4200 min⁻¹
 Design pressure: Vacuum to 2 barg (29 PSIG)
 Design temperature: 120 °C (248 °F)
 Motor size: 3.7 kW (5 hp)
 Size: height 59 cm (23") depth 51 cm (20"), length 99 cm (39")
 Weight: 159 kg (350 lb)

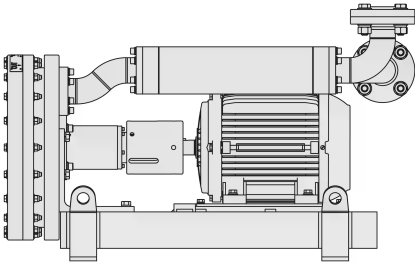


Blower type: Single stage, regenerative
 Speed: min. 750 min⁻¹, max. 3,600 min⁻¹
 Design pressure: Vacuum to 20.7 barg (300 PSIG)
 Design temperature: 100 °C (212 °F)
 Motor size:
 460 V, 3 phase, 60 Hz, 30 kW (40 hp)
 Size: height 63 cm (25"), 84 cm (33") with silencer,
 depth 69 cm (27"), length 119 cm (47")
 Weight: 180 kg (400 lb)



Blower type: Single stage, regenerative
 Speed: min. 750 min⁻¹, max. 5,000 min⁻¹
 Design pressure: Vacuum to 2.0 barg (29 PSIG)
 Design temperature: 80 °C (176 °F) with standard ball bearings
 Motor size:
 200 V, 3 phase, 50 Hz, 0.55 kW (0.74 hp)
 Size: height 33 cm (13"), 46 cm (18") with silencer,
 depth 36 cm (14"), length 61 cm (24")
 Weight: 100 kg (220 lb)

RELY ON EXCELLENCE



Blower type: Single stage, regenerative
Speed: min. 2,000 min⁻¹, max. 5,000 min⁻¹
Design pressure: Vacuum to 2.1 barg (30 PSIG)
Design temperature: 80 °C (176 °F)
Noise level:
76 dBA at 2,900 min⁻¹; 82 dBA at 4,000 min⁻¹
Motor size:
230/460 V, 3 phase, 60 Hz, 2.2 kW (3 hp)
Size: height 49 cm (19.2"), 60 cm (25.5") with silencer,
depth 48 cm (19"), length 97 cm (38")
Weight: 140 kg (308 lb)

Charts

Performance curves for type 128-0500

Performance curves for type 128-0400

Performance curves for type 128-0300

Performance curves for type 128-0200