

RELY ON EXCELLENCE

## QFT6 Quench system

API 682 4th edition product range | Seal supply systems | Quench systems



### Advantages

- Sight-glass for MIN/MAX monitoring has a large indicator area
- Filling is possible by filling filter or a separate pipe connection
- Combined filling and ventilation filter in the quench fluid tank for reliable operation
- Tank made of 1.4571: high resistance to corrosive media

### Standards and approvals

- API 682 / ISO 21049
- API 682 4th ed. Cat. 2/3 - 1CW-FL

### Recommended piping plans

API Plan 51

### Features

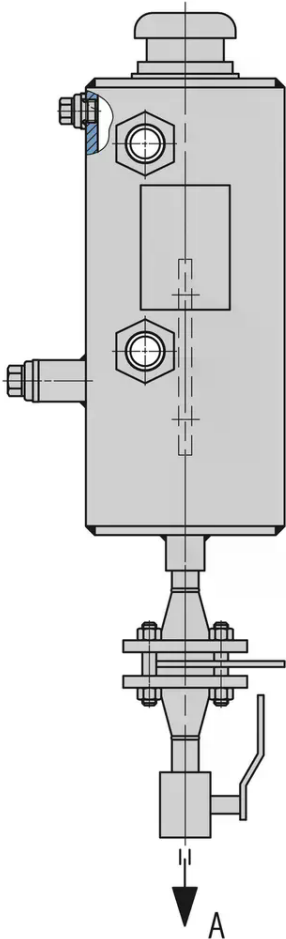
Quench fluid supply systems are used with single mechanical seals. They act as a convenient fluid reservoir. The QFT6000A4 stainless steel tank is equipped with a sight-glass for monitoring the MIN/MAX filling level and can be fastened with a lug fixture.

### Functional description

Quench fluid systems (Plan 51) are employed to:

- Absorb leakage
- Monitor the leakage rate (e.g., through periodic reading of the level in the tank)
- Prevent icing
- Protect against dry running
- Stabilize the lubricating film
- Exclude air from the media in order to prevent a reaction with oxygen in the air

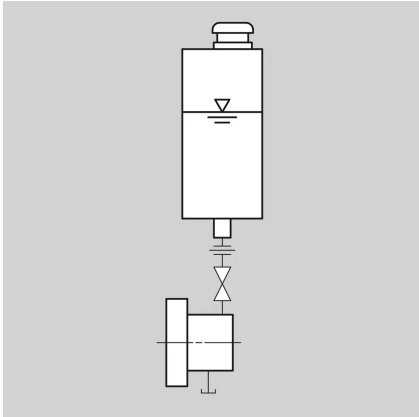
RELY ON EXCELLENCE



QFT6000A4

A To mechanical seal

### Installation, details, options



P&ID for QFT6000A4

## RELY ON EXCELLENCE

### Product variants

Designation	QFT6000M001-D0
Design code	n/a
Volume, vessel (liters)	3
Allowable pressure	Pressureless
Allowable temperature <sup>1)</sup>	-29 °C ... +100 °C (-20 °F ... +212 °F)
Metal parts (tank)	316Ti
Filling filter	Glass-fibre-reinforced polyamide
Sight-glass	Borosilicate
Gasket	Spiraltherm®

Other versions on request.

1) Design data, permissible working values depend on the actual conditions of service.