

RELY ON EXCELLENCE

GSS6000 Gas supply system

API 682 4th edition product range | Seal supply systems | Gas supply systems



Advantages

- Coalescing filter with integrated sight-glass for monitoring liquid level to ensure safe operation even in case of poor gas quality.
- Rigid base frame for easy rack mounting.
- Wide range of flow monitoring to ensure utmost reliability of mechanical seals.

Materials

- Refining technology
- Oil and gas industry
- Petrochemical industry
- Chemical industry
- Power plant technology

Standards and approvals

- API 682 / ISO 21049
- API 682 4th ed. Cat. 2/3 - 2CW-CS
- API 682 4th ed. Cat. 2/3 - 2NC-CS
- API 682 4th ed. Cat. 1 - 2NC-CS
- Compliant to TA Luft (German Clean Air Act)

Recommended piping plans

API Plan 72

Features

- Safe operation due to incorporated pressure regulator with upstream filter
- System mounted on a plate
- Easy wall or rack mounting

Functional description

Buffered, gas-lubricated mechanical seals may only be used in conjunction with adequately pressurized gas (e. g. from a closed circular nitrogen pipeline provided by the operator). The minimum pressure overlay level (Δp) is specified for the individual seal types.

Main GSS functions:

- Filtering of the buffer and flushing gas
- Flow monitoring

Typical tasks for the GSS:

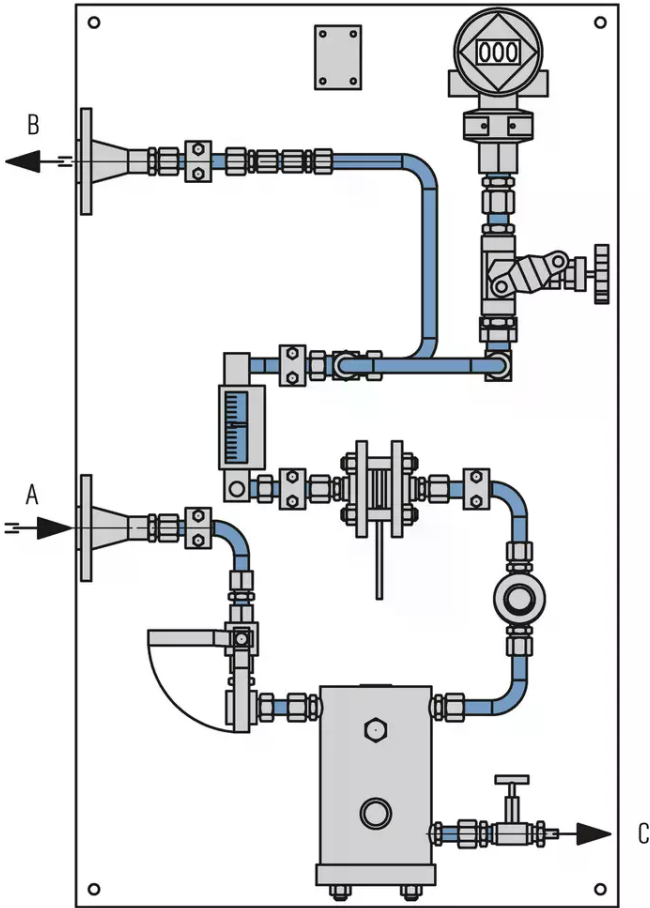
- Gas flushing for single seals
- Gas supply for tandem seals

Notes

Design, calculation and production acc. to ASME VIII, Div. 1.

3rd party inspection and other certificates on request.

RELY ON EXCELLENCE

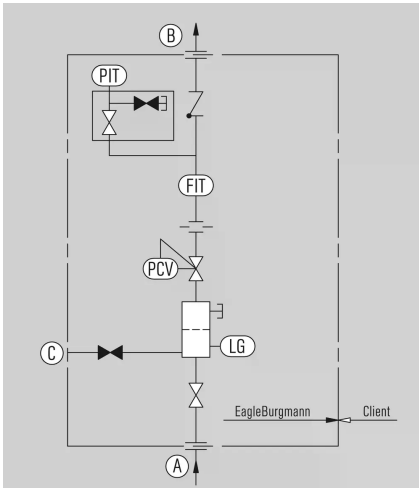


GSS6000A4

A Gas IN
B Gas OUT
C Drain

RELY ON EXCELLENCE

Installation, details, options



P&ID for GSS6000A4
Gas supply system

- A Gas IN
- B Gas OUT
- C Drain

Product variants

Designation	GSS6000A4M001-D0
API piping plan	Plan 72
Design code	ASME
Allowable pressure ¹⁾	40 bar (580 PSI)
Allowable temperature ¹⁾	-20 °C ... +50 °C (-4 °F ... +122 °F)
Process connections	Flange 1/2", 600 lbs
Metal parts	316/316L

Other versions on request.

1) Design data, permissible working values depend on the actual conditions of service.