

RELY ON EXCELLENCE

## SPX6 Flush unit

API 682 4th edition product range | Seal supply systems | Flush units



### Features

The EagleBurgmann flush unit of the SPX6000A4 range consist of a manifold with integrated inline filter supplied together with a needle valve and pressure gauge. Optional available with temperature gauge and/or flow indicator. The unit is used to control the flushing of a mechanical seal.

### Functional description

The SPX6000A4 flush unit continuously supplies flushing media from an external source to the mechanical seal. This plan is almost always used in combination with a throat bushing which serves as a throttle device to maintain a higher pressure in the stuffing box to isolate the pumped product from the seal chamber.

### Advantages

- Compact design due to integral filter
- Modular concept - optional monitoring equipment available

### Standards and approvals

- API 682 / ISO 21049
- API 682 4th ed. Cat. 2/3 - 1CW-FL
- API 682 4th ed. Cat. 2/3 - 2CW-CW
- API 682 4th ed. Cat. 2/3 - 2CW-CS
- API 682 4th ed. Cat. 2/3 - 3CW-FB
- API 682 4th ed. Cat. 2/3 - 3CW-BB
- API 682 4th ed. Cat. 2/3 - 3CW-FF
- API 682 4th ed. Cat. 1 - 1CW-FX
- API 682 4th ed. Cat. 1 - 2CW-CW
- API 682 4th ed. Cat. 1 - 3CW-FB

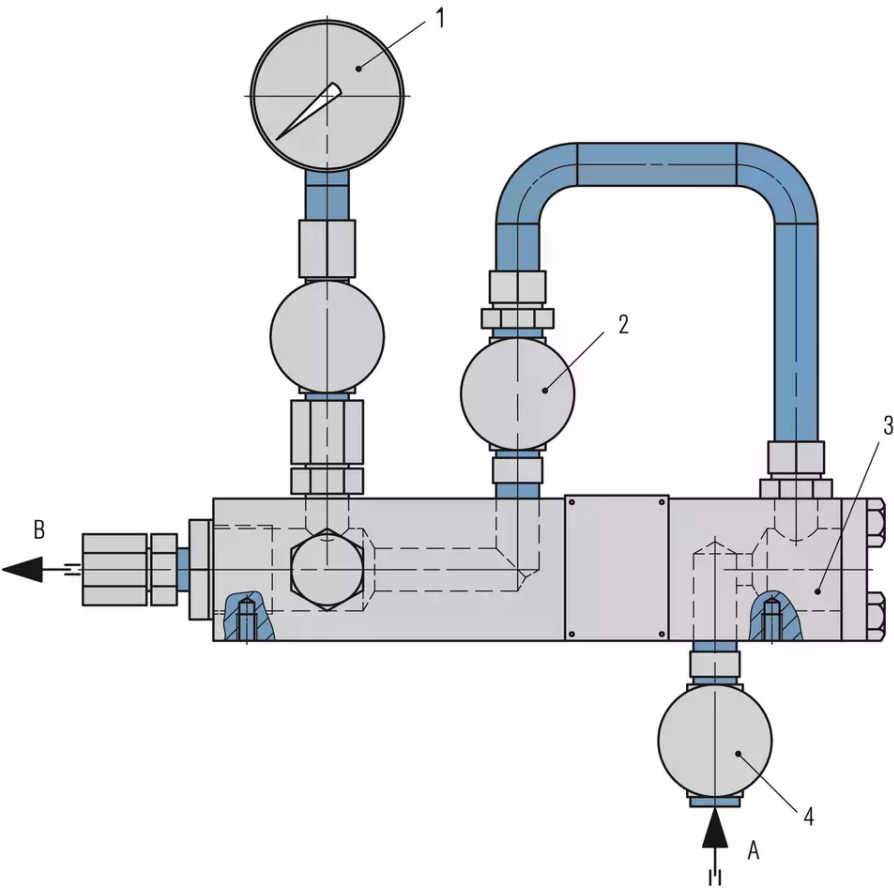
### Recommended applications

- Refining technology
- Oil and gas industry
- Petrochemical industry
- Chemical industry
- Power plant technology

### Recommended piping plans

API Plan 32

RELY ON EXCELLENCE



**SPX6000A4**

- 1 Pressure indicator
- 2 Needle valve
- 3 Integral filter
- 4 Valve

A From external source  
B To mechanical seal

RELY ON EXCELLENCE

## Installation, details, options

### Product variants

Designation	SPX6000A4
Allowable pressure <sup>1)</sup>	44 bar (638 PSI)
Allowable temperature <sup>1)</sup>	-20 °C ... +120 °C (-4 °F ... +248 °F)
Process connections	1/2" NPT
Metal parts	316/316L

Other versions on request.

1) Design data, permissible working values depend on the actual conditions of service.