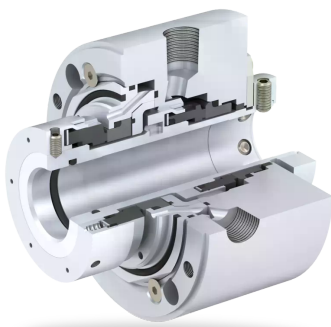


RELY ON EXCELLENCE

H75A4-T

API 682 4th edition product range | Mechanical seals | Balanced pusher seals



Features

- API 682 Category 2 and 3, Type A, Arrangement 2 and 3 seal
- Dual seal in face-to-back arrangement
- Balanced
- Cartridge unit
- Rotating multiple springs
- Integrated pumping device
- Suitable for pressure reversals
- Replaces the H75VK seal

Advantages

- Universally applicable both for retrofits or original equipment
- Efficient stock keeping due to standardized components
- Extended selection of materials
- Extended field of operation in terms of temperature and pressure
- Optimized torque transmission
- Metal parts also in special materials available

Operating range

Shaft diameter:

$d_1 = 20 \dots 110 \text{ mm (0,79" ... 4,33")}$

Pressure: $p_1 = \dots 42 \text{ bar (609 PSI)}$

Temperature:

$t = -40 \text{ °C ... } +176 \text{ °C (-40 °F ... } +349 \text{ °F)}^*$

Sliding velocity: $v_g = 23 \text{ m/s (76 ft/s)}$

Axial movement:

$d < 50 \text{ mm } \pm 1,0 \text{ mm}$

$d \geq 50 \text{ mm } \pm 1,5 \text{ mm}$

* Engineered up to 260 °C (500 °F) with FFKM (K) secondary seals

Materials

Seal rings: Blister resistant carbon, Silicon carbide SSiC (Q1), RBSiC (Q2)

Mating rings:

Silicon carbide SSiC (Q1), RBSiC (Q2)

Secondary seals:

EPDM (E), NBR (P), FKM (V), FFKM (K)

Springs: Hastelloy® C-276 (M5)

Metal parts: CrNiMo steel 316 (G) or equivalent, optional materials on request.

Standards and approvals

- API 682 / ISO 21049
- API 682 4th ed. Cat. 2/3 - 2CW-CW
- API 682 4th ed. Cat. 2/3 - 3CW-FB
- Compliant to TA Luft (German Clean Air Act)

Recommended applications

- Highly volatile hydrocarbons
- Refining technology
- Oil and gas industry
- Petrochemical industry
- Chemical industry
- Power plant technology
- CCUS
- Hydrogen
- Sustainable plastics production
- Alternative fuels production
- Nuclear power technology
- LPG plants
- API 610 / ISO 13709 pumps
- Process pumps

Recommended piping plans

Process side:

- API Plan 01
- API Plan 02
- API Plan 03
- API Plan 11
- API Plan 12
- API Plan 13
- API Plan 14
- API Plan 21

RELY ON EXCELLENCE

API Plan 22
API Plan 23
API Plan 31
API Plan 32
API Plan 41

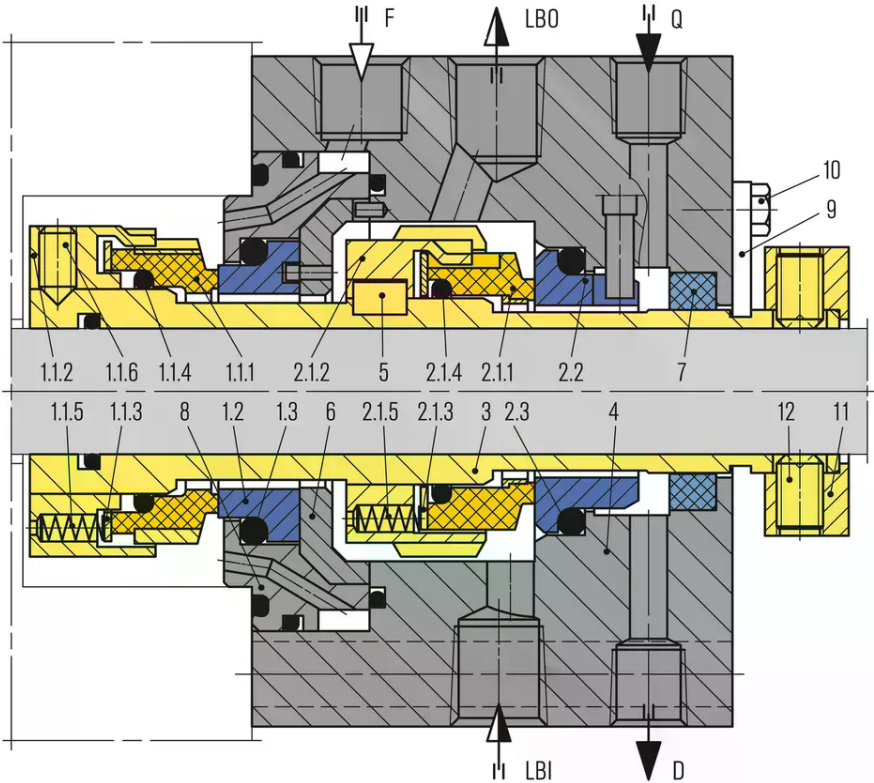
Between seals:

API Plan 52
API Plan 53A
API Plan 53B
API Plan 53C
API Plan 54
API Plan 55

Atmospheric side:

API Plan 61
API Plan 62
API Plan 65A
API Plan 65B

RELY ON EXCELLENCE



Item	Description
1.1.1, 2.1.1	Seal ring
1.1.2, 2.1.2	Driver
1.1.3, 2.1.3	Thrust ring
1.1.4, 1.3, 2.1.4, 2.3	O-Ring
1.1.5, 2.1.5	Spring
1.1.6, 12	Set screw
1.2, 2.2	Mating ring
3	Seal sleeve
4	Gland plate
5	Key
6	Adapter ring
7	Throttle ring
8	Adapter
9	Setting device
10	Hexagon bolt
11	Set ring

F Flush
 LBO Liquid buffer/barrier OUT
 Q Quench
 LBI Liquid buffer/barrier IN
 D Drain